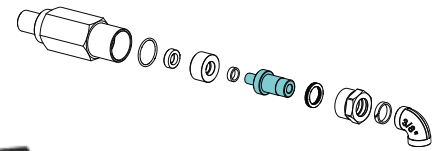
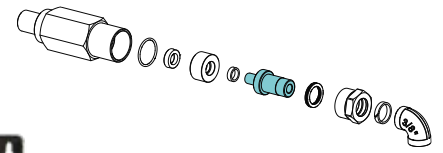


SERIES 8400



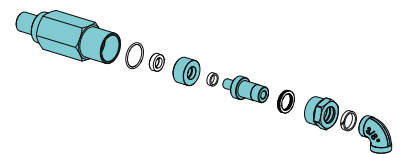
- Brackets in steel, painted with epoxy resin powders.
- Standard joint
- End pipe fitting in brass/steel
- Screws and bolts in steel

8400 LIGHT INOX

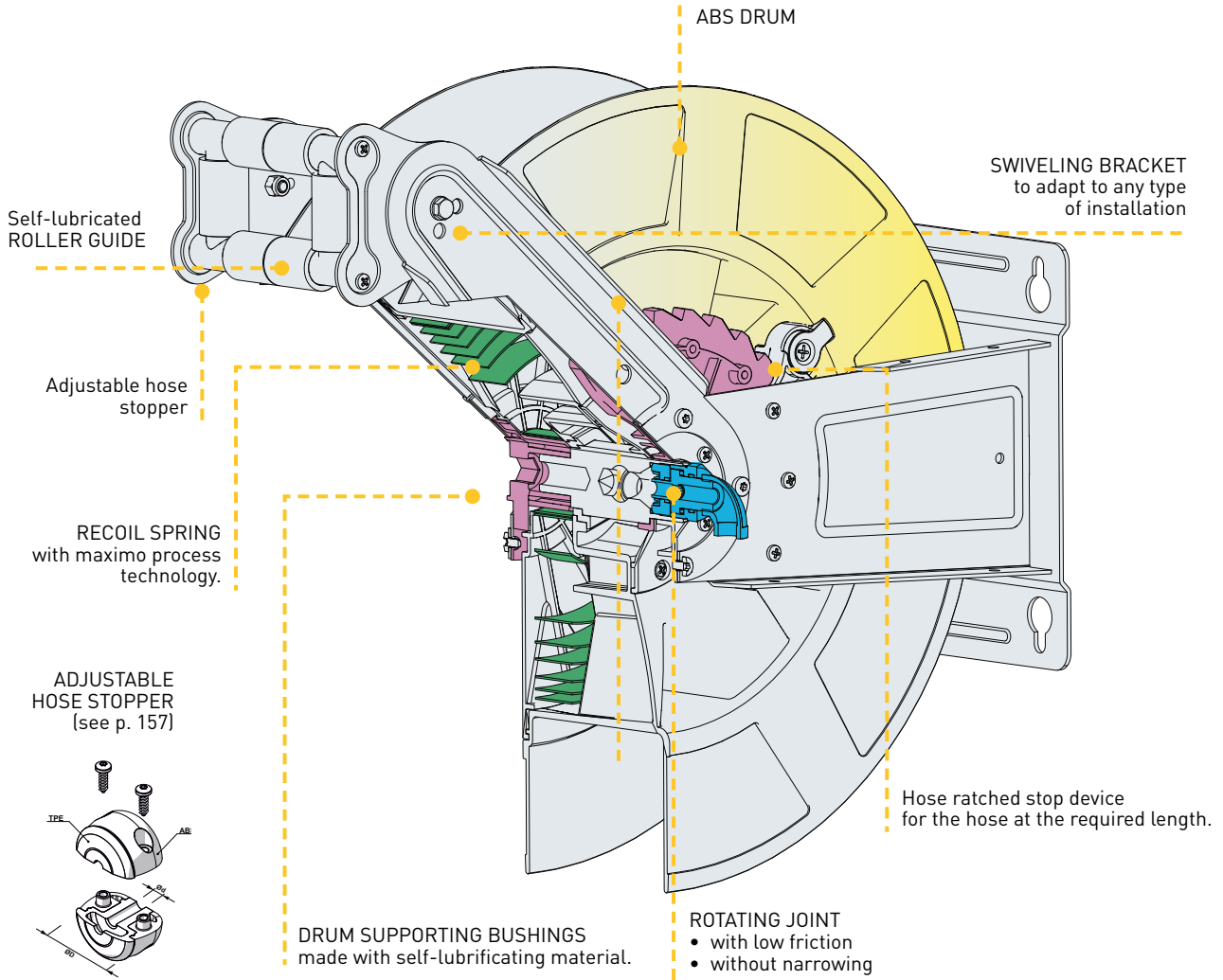


- Bracket in stainless steel AISI 304
- Standard joint
- End pipe fitting in brass/steel
- Screws and bolts in stainless steel

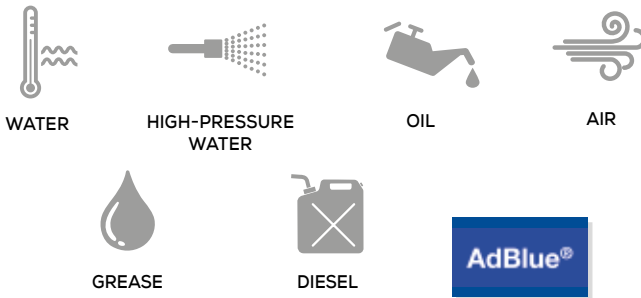
8400 FULL INOX



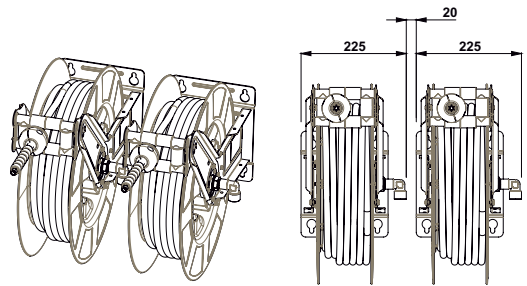
- Bracket in stainless steel AISI 304
- Rotating joint and incoming fitting in stainless steel
- End pipe fitting in stainless steel
- Screws and bolts in stainless steel



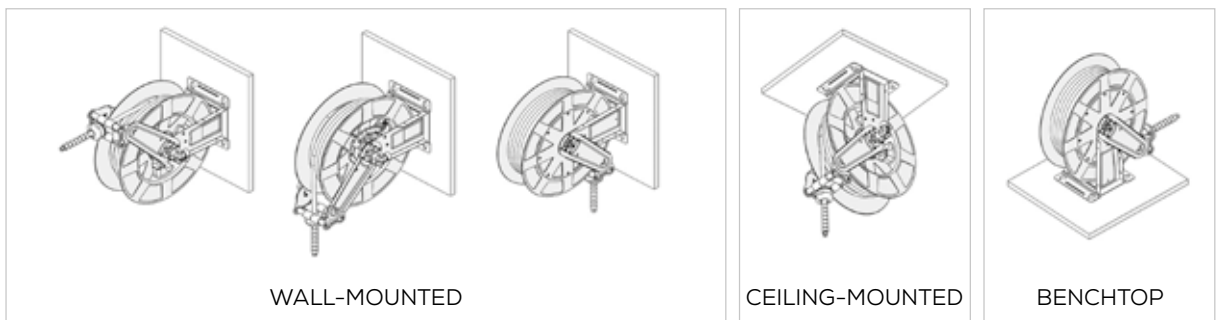
SUITABLE FOR



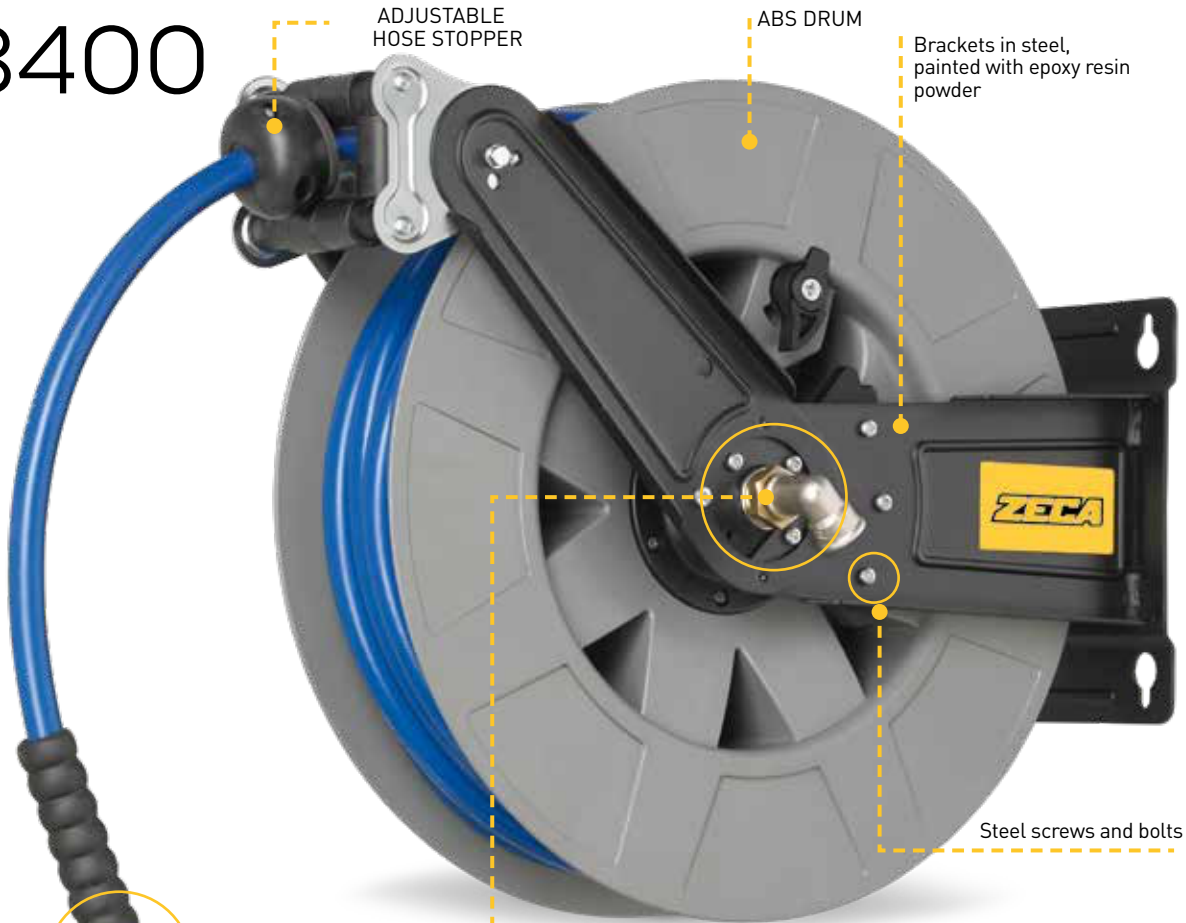
DIMENSIONS



INSTALLATION

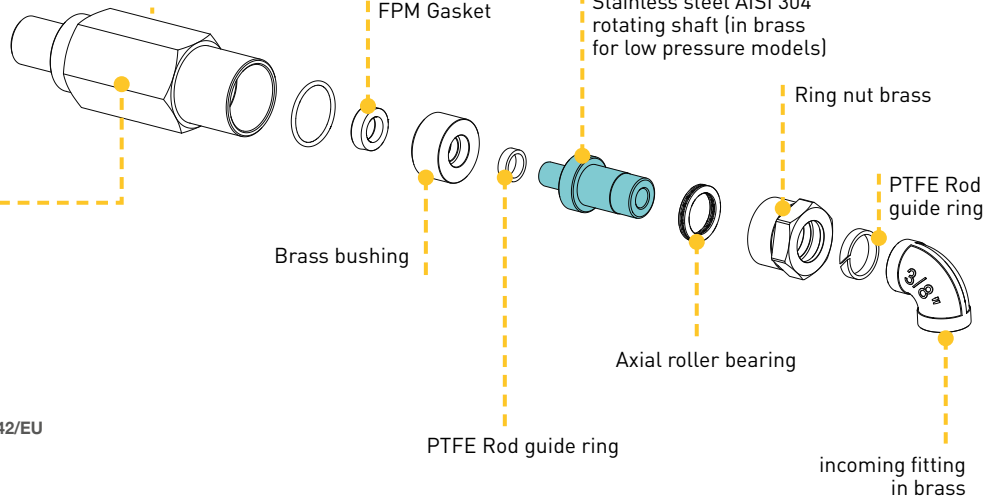


8400



End pipe fitting in brass/steel

Steel coil shaft



ISO EN 12100



2006/42/EU



Compliant with Directives
2014/34/EU

Marking **CE**
II 2 GD c IIB T4/T135° CX

Examination Certificate Number for
IMQ 14 ATEX 009 X

Compliant with standards
EN 13463-1: 2009 | EN 13463-5: 2011

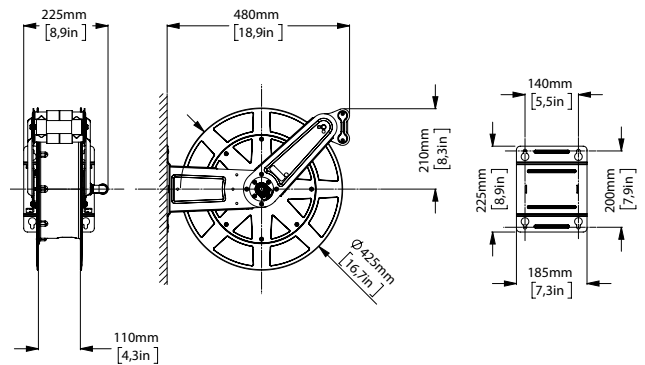


14



mm 550x505x270
Kg 10

dimensions 8400



Max press	Suitable for	Hose type	Hose Int. Ø	Hose length	Art.		Fluid Temperature	End pipe fitting	Incoming fitting	
20 bar	Air Water	NO HOSE	/	/	8401	/	-15°C/+50°C	1/2" F	1/2" F	
			/	/	8480	AISI 316L joint				
		SAE 100R6	6 mm (1/4")	20	8412	/		Ex		1/4" M
			8 mm (5/16")	20	8402	/				3/8" M
			10 mm (3/8")	12	8404					1/2" M
			10 mm (3/8")	18	8406					
			12,5 mm (1/2")	10	8408					3/8" M
			12,5 mm (1/2")	15	8410					
			KPU	10 mm (3/8")	20	8424				
		12,5 mm (1/2")		15	8426					
12,5 mm (1/2")	20	8427								
15 bar	Water	PU-FOOD QUALITY*	12,5 mm (1/2")	12	8432	/	-10°C/+60°C	1/2" M	1/2" F	
	Diesel Oil	PVC - PU	19 mm (3/4")	8	8415	/	-10°C/+60°C	3/4" F swivelling	3/4" M	
	Ad Blue		19 mm (3/4")	8	8482	AISI 316L joint				
160 bar	Oil	EN 857 1SC	12,5 mm (1/2")	10	8474	/	-15°C/+120°C	1/4" F swivelling		
200 bar	Oil Water	NO HOSE	/	/	8440	/	-15°C/+130°C	1/2" F	3/8" F	
180 bar		EN 857 1SC Nero	8 mm (5/16")	20	8441	/				Ex
			10 mm (3/8")	15	8442					
			10 mm (3/8")	18	8443					
		EN 857 1SC Blu Non Marking	10 mm (3/8")	15	8446					
10 mm (3/8")			18	8448						
400 bar	Oil Grease	NO HOSE	/	/	8460	/	-20°C/+120°C	1/2" F	3/8" F	
		EN 857 2SC	6 mm (1/4")	12	8462	/		1/4" M		
			18	8463	/	1/4" M				

EN

* REG. UE 1935/2004 AND REG. UE 10/2011 certified hose for use in the food industry. Not suitable for food liquids transfer.

FR

*NOTE: REG. UE 1935/2004 AND REG. UE 10/2011 Tuyau certifié pour utilisation dans l'industrie alimentaire. Ne convient pas au passage des liquides alimentaires.

DE

NOTE: Schlauch zertifiziert nach VERORD. EU 1935/2004 und VERORD. EU 10/2011, d. h. geeignet für den Kontakt mit Lebensmitteln. Nicht für Lebensmittelflüssigkeiten geeignet.

ES

* Manguera certificada de acuerdo con REG. UE 1935/2004 y REG. UE 10/2011 adecuada para el contacto con alimentos. No adecuada para el paso de líquidos alimentarios.